



Maximizing Graduation Success with a Data-Driven Approach



PANORAMA
EDUCATION

INTRODUCTION

Graduation is a critical milestone for students,

marking not only the completion of their high school journey but also the gateway to post-secondary opportunities. For many districts, ensuring students graduate on time is a top priority, but with [national graduation rates stagnating at 87%](#), it's clear there are challenges to address.

In this e-book, we'll explore how career and technical education (CTE) programs, multi-tiered systems of support (MTSS), and advanced graduation tracking systems can transform outcomes for students, equipping them for life beyond high school. By focusing on engagement, data-driven decision-making, and proactive interventions, districts can support every student's path toward graduation.



Table of Contents

Chapter 1	Why Graduation Tracking is Crucial for District Success	Pg. 4
Chapter 2	Integrating Graduation Tracking Into Multi-Tiered Systems of Support (MTSS)	Pg. 5
Chapter 3	Using Data to Drive Graduation Success	Pg. 6
Chapter 4	The Link Between Student Engagement and Graduation	Pg. 7
Chapter 5	Boosting Graduation Rates with CTE	Pg. 8
Conclusion	The Future of Graduation Tracking	Pg. 9

CHAPTER 1:

Why Graduation Tracking is Crucial for District Success

Graduation tracking is a powerful tool that helps districts ensure students are on course to complete their high school education. This process involves monitoring students' academic progress, course credits, attendance, and other key indicators to prevent students from falling behind.

What Is Graduation Tracking?

Graduation tracking ensures that students meet all the requirements needed for on-time graduation, including academic credits, standardized test scores, and course sequences. By identifying at-risk students early, districts can implement targeted interventions that keep students on track to graduate.

Why Graduation Tracking Matters:

- **Early Identification:** Graduation tracking identifies students who are falling behind, allowing districts to intervene before it's too late.
- **Equity and Access:** Graduation tracking ensures that all students, including those from underserved communities, receive the support they need to graduate.
- **District Accountability:** Accurate graduation data is critical for district accountability and reputation. It ensures transparency and builds trust with families and communities.
- **Fiscal Responsibility:** Districts with [Perkins V funds](#) must develop, monitor, and measure CTE programs. They need to be able to track beyond graduation and monitor different pathways, such as CTE.



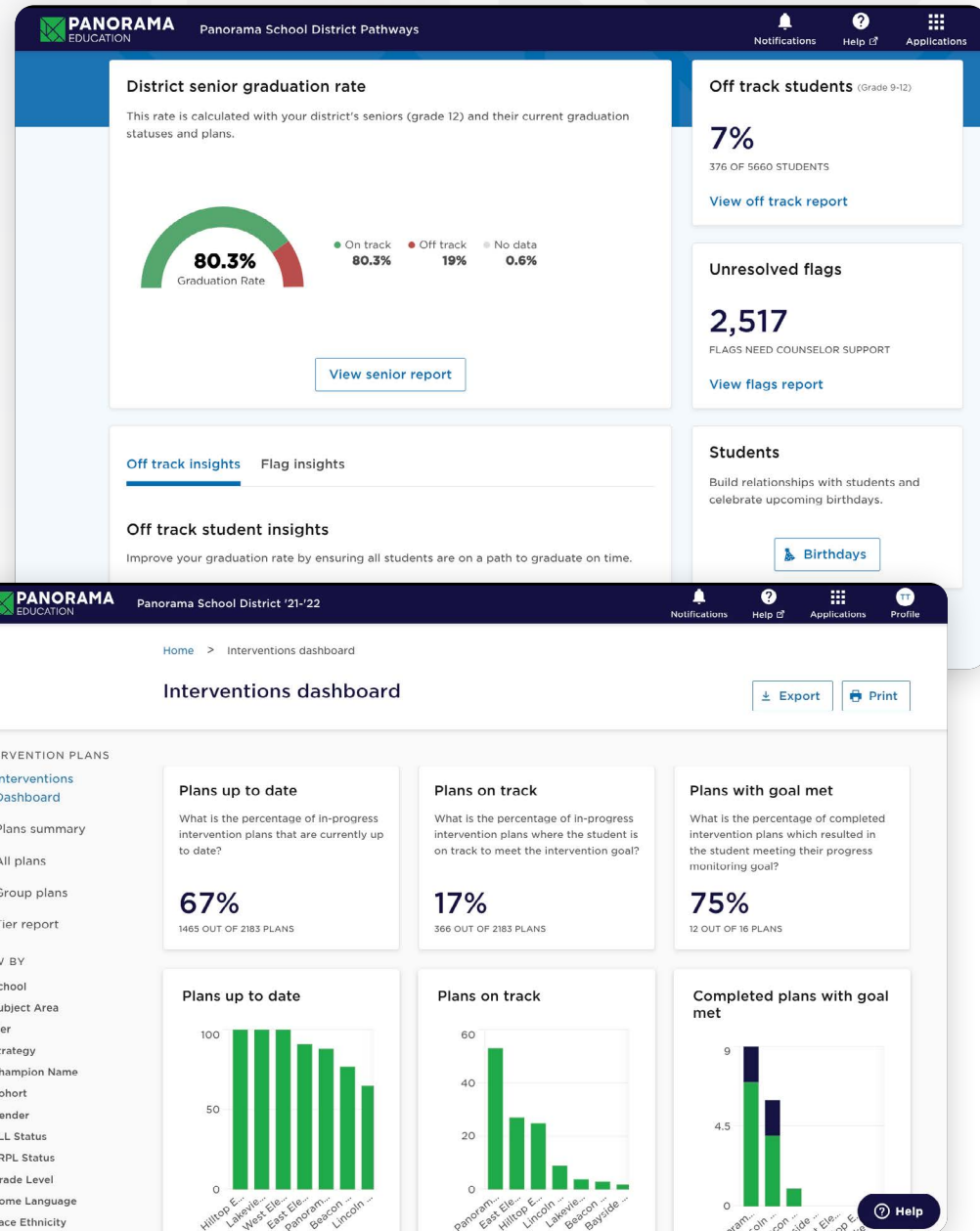
CHAPTER 2:

Integrating Graduation Tracking Into Multi-Tiered Systems of Support (MTSS)

Graduation tracking becomes even more effective when integrated into a district's MTSS framework. MTSS allows districts to provide different levels of support based on individual student needs, incorporating graduation data into this system to ensure students receive the right interventions at the right time.

How MTSS Enhances Graduation Tracking:

- 1. Tiered Interventions:** The MTSS framework consists of three tiers of support. Students are given access to the support they need across academics, attendance, behavior, and graduation readiness:
 - **Tier 1:** Universal supports, such as guidance on course selection.
 - **Tier 2:** Targeted supports for students struggling with attendance or coursework.
 - **Tier 3:** Intensive, personalized interventions for students significantly behind on credits.
- 2. Comprehensive Student View:** By combining graduation tracking data with academic and behavioral data, districts gain a full understanding of each student's progress. This insight allows for more tailored interventions that address the root causes of challenges.



CHAPTER 3:

Using Data to Drive Graduation Success

District leaders can use graduation tracking data not just to support individual students but also to make strategic, data-driven decisions at the district level. This data can reveal trends, highlight areas of improvement, and guide resource allocation to ensure the most effective interventions are in place.

The Importance of Actionable, Accessible Data

Districts need actionable, easily accessible data to ensure students stay on track for graduation. Instead of spending time pulling data, platforms like [Panorama Pathways](#) can now shift the focus to immediate, data-driven actions that support student success. A platform that automatically tracks graduation requirements and flags when students are off track allows districts to quickly intervene, keeping students on their path to success. The ability to visualize up-to-date data ensures that schools can spend less time on data management and more time on helping students achieve their goals.

- Immediate access to graduation data empowers schools to take timely action.
- A platform that tracks key data points, like credits earned and course completion, helps schools proactively support students.
- Automatic flags for students who are off track allow for early interventions.
- Up-to-date visual data reduces time spent on pulling information, shifting focus to actionable steps.
- With clear insights, schools can make informed decisions and ensure no student falls through the cracks.

Data-Driven Interventions for Long-Term Success:

- **Early Warning Signs:** Graduation tracking data helps identify warning signs early, such as poor attendance or declining grades, enabling districts to take proactive action.
- **Resource Allocation:** Data helps districts allocate resources to areas most in need, whether that's credit recovery programs, counseling, or additional academic support.
- **Continuous Improvement:** Graduation tracking allows districts to regularly evaluate their strategies and adjust as needed, fostering a culture of continuous improvement.



CHAPTER 4:

The Link Between Student Engagement and Graduation

Student engagement is a key to academic success, especially at the high school level. When students feel connected to their learning, they are more likely to attend class regularly, complete their programs, and graduate on time. However, traditional academic pathways may not resonate with all students, which can lead to disengagement and [chronic absenteeism](#)—both strong predictors of lower graduation rates.

The Power of Career and Technical Education (CTE)

CTE programs offer a practical solution to this challenge by aligning academic learning with real-world experience. CTE pathways, ranging from healthcare to information technology, provide hands-on learning that equips students with industry-recognized skills and certifications. [With 16+ career clusters representing 79+ career paths](#), these programs engage students by making education relevant to their career interests, which in turn fosters greater attendance and academic success.

CTE Pathways in Action:

- Healthcare: Nursing, medical assisting, and health informatics.
- Information Technology: Cybersecurity, coding, and network management.
- Creative Arts and Design: Digital media, graphic design, and animation.

CTE's Impact on Attendance and Graduation



Studies have shown that students enrolled in CTE programs are not only more likely to attend school but also more likely to graduate on time. One study found that CTE concentrators were 7 percentage points more likely than non-CTE concentrators to graduate from high school on time. By giving students autonomy over their learning, CTE programs enhance engagement, attendance, and, ultimately, graduation rates.

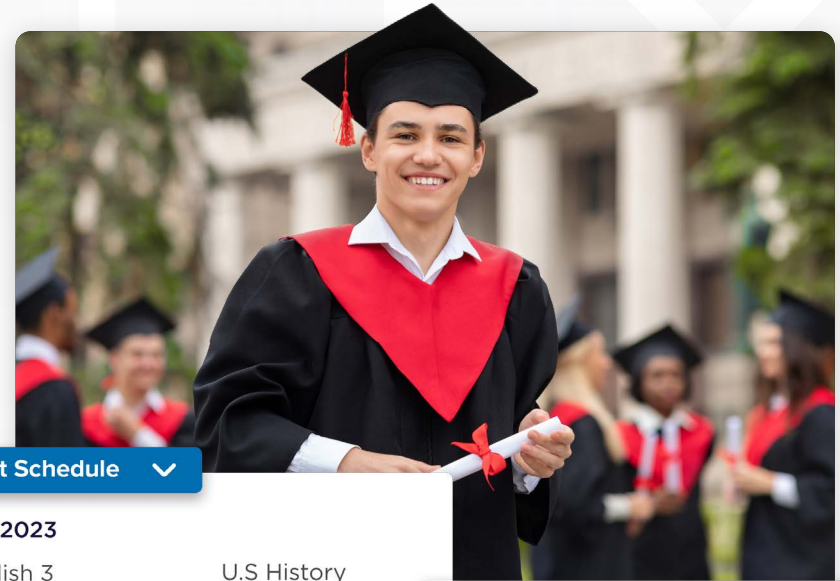
CHAPTER 5:

Boosting Graduation Rates with CTE

Career and Technical Education plays a pivotal role in helping students stay on track to graduate. By integrating CTE into both MTSS and graduation tracking systems, districts can ensure students meet graduation requirements and gain valuable skills for life beyond high school.

CTE's Role in Graduation Success:

- **Career Readiness:** CTE equips students with both the academic and technical skills needed to succeed in the workforce.
- **Engagement and Retention:** Students in CTE programs are more engaged and less likely to drop out, as they see direct relevance between their education and future careers.
- **Consistent Attendance:** There is a clear link between engagement in CTE programs and improved attendance rates. When students feel engaged in their learning, they are more likely to attend school consistently.



Student Schedule

Fall 2023

English 3	U.S History
Biology	Accounting
Calculus	Marching Band

Spring 2024

English 4	Economics
Chemistry 1 Pre-AP	Computer Science
Calculus	Art 2 Drawing

CTE pathways progress

View progress made towards CTE pathways.




Grade level: Grade 12, Class of 2024

Overall grade: 3.5 GPA (Unweighted), Class rank 250 of 450

CTE status: Incomplete



Concentrator 1 - Completed

Course	Grade level 	Grade 	Credits earned 
Health Science 1	Grade 12	85.0%	1.0 / 1.0 credits

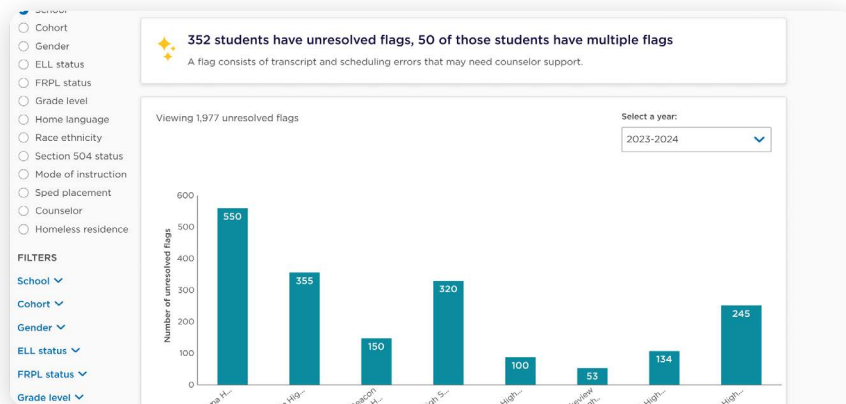
CONCLUSION

The Future of Graduation Tracking

Graduation tracking, when combined with CTE and integrated into MTSS frameworks, provides a comprehensive approach to student success. With the right tools and systems in place, districts can ensure that all students—regardless of background—have the support they need to graduate on time and prepare for life after high school.

[Panorama Pathways](#) offers a complete solution for graduation tracking, student success, and CTE monitoring, enabling districts to track student progress, intervene early, and support on-time graduation.

Pathways, when combined with our market-leading K–12 MTSS platform, [Panorama Student Success](#), helps district administrators, school leaders, and educators support the whole student across academics, attendance, behavior, life skills, on-time graduation, career readiness, and CTE tracks.



About Panorama Education

Panorama Education is an education technology company founded in 2012 that helps improve students' academic success and well-being, giving districts and schools a platform to hear what families, students, and teachers need in the classroom. Educators use Panorama's software platform to understand and support students across academics, attendance, behavior, and life skills development.

District leaders use the same platform to track progress toward strategic goals, such as literacy, graduation, and school safety. Panorama is proud that our platform supports 15 million students, 25,000 schools, and 2,000 districts across the United States. For more information, visit www.panoramaed.com.

[Get a Demo Here](#)

